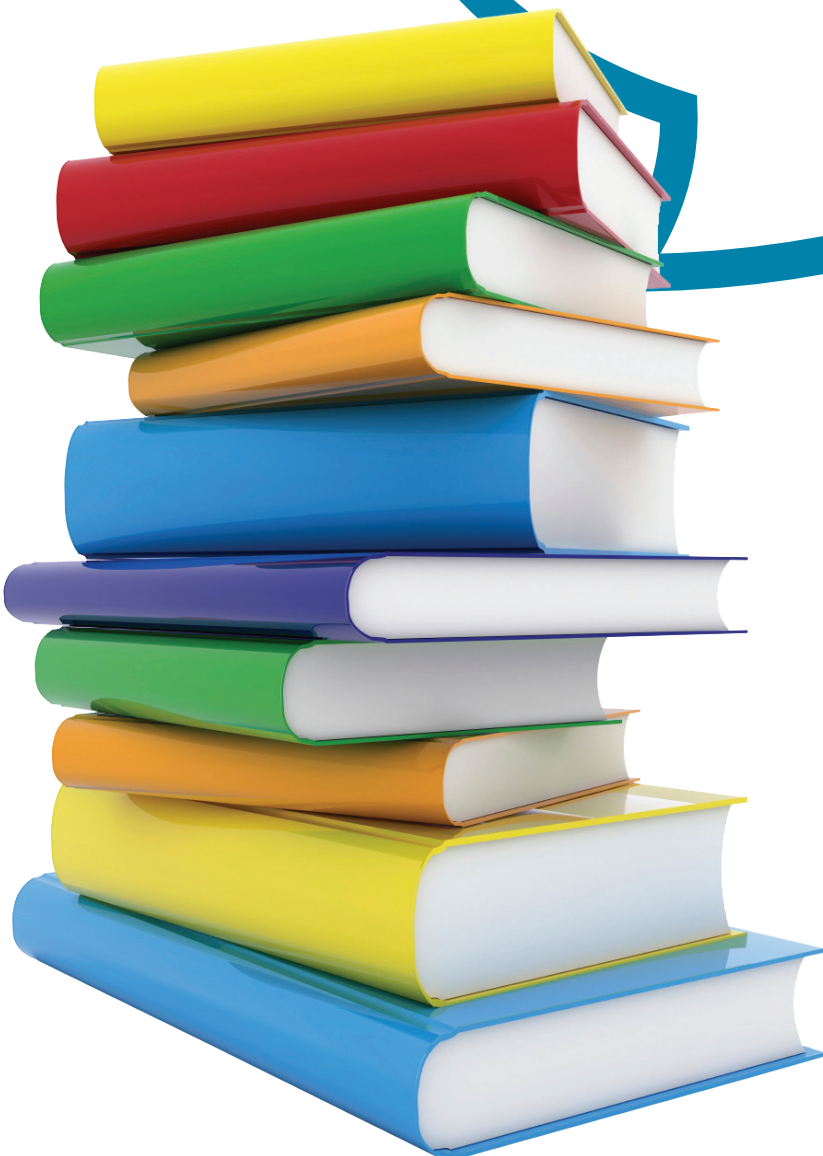


Consultation on changes to library opening hours in South Lakeland

**Public
Consultation**

**Closing date
17 June 2016**



What is this consultation about?

Cumbria County Council is committed to libraries. They are about more than just books. They are community hubs providing access to a huge range of resources, experiences and learning.

Like all council services, government cuts have put financial pressure on libraries. The council has made every effort to manage this without affecting the service the public receives. This has been successful and Cumbria has avoided the wholesale changes to library services which have occurred elsewhere in the country.

But on occasion we have had days when there have been unplanned library closures because cover staffing has not been available. This is something we'd rather avoid, we want people to know for certain when libraries will be open.

Alongside this we've also been reviewing when people are actually using our libraries. This is to make sure we use our resources most efficiently.

In this document we are proposing some limited changes to opening hours that reflect these two issues. The changes will not lead to staffing reductions, staff will continue to work the same hours, but more of these will be spent on essential operational activity 'behind the scenes' while the library is closed to the public. This time is needed to allow us to continue to offer a first class service when we are open.



What our libraries can offer to you



You can enjoy:

- Reading groups
- Author visits and talks
- Events and activities
- ICT taster sessions
- Local and family history
- Computer access and printing
- Free WiFi

What are we proposing for South Lakeland libraries?

We are proposing changes to opening hours for six of South Lakeland's eight libraries: Ambleside; Kendal; Milnthorpe; Ulverston; Grange; and Windermere. Kirkby Lonsdale and Sedbergh would not change. Instructions for how you can share your views on our proposals are given at the end of this document.



What our libraries can offer to you

For Children and Young People we offer:

- Rhyme times and story times
- Homework resources
- Summer Reading Challenge
- Holiday activities and events

The proposed changes would ensure that we:

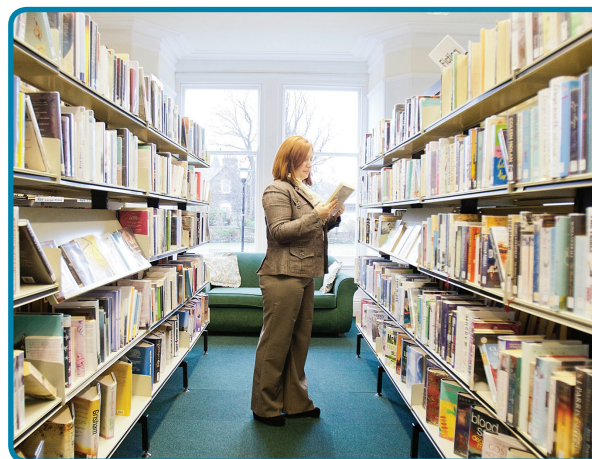
- Can keep all eight staffed libraries open;
- Continue to offer free WiFi and 2 hours computer access;
- Keep all libraries open every Saturday;
- Ensure some libraries are open in the evening;
- Continue to offer an exciting and varied programme of events, fun activities and learning opportunities for all ages;
- Avoid closures at short notice;
- Keep the collections up to date and attractive to borrowers;
- Provide a home delivery service;
- Support five library links and book drops;
- Support community activities for all age groups such as the Dementia Choir at Ambleside and the Summer Reading Challenge.

Current and proposed opening hours

Ambleside	Current Hours	Proposed Hours
Monday	10am to 5pm	10am-1pm 2pm-5pm
Tuesday	1pm-7pm	1pm-6pm
Wednesday	10am-5pm	10am-1pm 2pm-5pm
Thursday	Closed	Closed
Friday	10am-5pm	10am-1pm 2pm-5pm
Saturday	10am-1pm	10am-1pm
Grange	Current Hours	Proposed Hours
Monday	9.30am-5pm	10am-1pm 2pm-5pm
Tuesday	9.30am-5pm	10am-1pm 2pm-5pm
Wednesday	9.30am-5pm	10am-1pm 2pm-5pm
Thursday	9.30am-5pm	10am-1pm 2pm-5pm
Friday	9.30am-5pm	10am-1pm 2pm-5pm
Saturday	9.30am-1pm	10am-1pm 2pm-5pm
Kendal	Current Hours	Proposed Hours
Monday	9.30am-7pm	9.30am-5pm
Tuesday	9.30am-5pm	9.30am-5pm
Wednesday	9.30am-7pm	9.30am-7pm
Thursday	9.30am-5pm	9.30am-1pm
Friday	9.30am-5pm	9.30am-5pm
Saturday	9.30am-3.30pm	9.30am-4pm
Sunday	12pm-4pm	Closed
Milnthorpe	Current Hours	Proposed Hours
Monday	10am-1pm 2pm-5pm, 5.30pm-7pm	2pm-6pm
Tuesday	10am-1pm	Closed
Wednesday	10am-1pm 2pm-6pm	2pm-6pm
Thursday	Closed	Closed
Friday	10am-1pm 2pm-5pm	10am-1pm 2pm-5pm
Saturday	10am-12.30pm	10am-2pm
Ulverston	Current Hours	Proposed Hours
Monday	9am-6pm	9am-5pm
Tuesday	9am-5pm	9am-5pm
Wednesday	9am-5pm	9am-5pm
Thursday	9am-6pm	9am-6pm
Friday	9am-5pm	9am-1pm
Saturday	9.30am-1pm	9.30am-1pm
Windermere	Current Hours	Proposed Hours
Monday	9.30am-5pm	9.30am-1pm
Tuesday	9.30am-5pm	9.30am-5pm
Wednesday	Closed	Closed
Thursday	9.30am-5pm	9.30am-5pm
Friday	9.30am-5pm	9.30am-5pm
Saturday	10am-1pm	10am-1pm

Additional closure times

In addition to the proposed changes, Ambleside and Grange libraries would close for one week during the year. This is because they are single staffed and it is not always possible to provide holiday cover without impacting the service at other libraries.



What our libraries can offer to you

You can:

- Find what you are looking for
- Check the library catalogue to search and reserve items
- Ask one of our friendly staff
- Go to our website www.cumbria.gov.uk/libraries
- Apply for a bus pass
- Top up your Rural Wheels Card
- Access and purchase OS mapping data
- Access information about County Council and other local authority services

How to respond to the consultation

The deadline for responses to this consultation is **17 June**.

Drop your completed questionnaire at any South Lakeland library or post it to: **Kendal Library, Stricklandgate, Kendal LA9 4PY**.

You can also respond online at: **www.cumbria.gov.uk/libraries**

There will also be drop-in sessions at all libraries where you can speak with a member of staff. The full timetable of drop-ins is available at **www.cumbria.gov.uk/libraries** and at each library/link.

You can contact us by email to **Kendal.library@cumbria.gov.uk** or by letter to **Kendal Library, Stricklandgate, Kendal, LA9 4PY**.

Note: Kirkby Lonsdale and Sedbergh Libraries will be closed for 1 week during the consultation.

What happens next

All feedback will be collated and a report prepared for South Lakeland Local Committee in July. It's the Local Committee's decision whether or not to implement the proposed changes.

If changes are agreed, they would be subject to a review after 12 months.

What our libraries can offer to you



Access for all:

- Home delivery service
- Large Print books
- Audio books
- Disabled access
- Well Read collections (Mental & Physical Health and Macmillan collection)



What our libraries can offer to you

You can borrow and access:

- Books and audiobooks
- DVDs/CDs,
- Storysacks
- Resource bags, e.g. Dementia Resource bags
- Online resources including e-books and online magazines